

R&M BEARINGS INTERNATIONAL

UNIT 13 MANHATTAN WORKS
DUNDONALD STREET
DUNDEE, SCOTLAND
DD3 7PY

TEL : 01382 455400 FAX : 01382 454645



Bush
Catalogue

Contents

Oil Impregnated Sintered Bronze Bushes (including Oilite™)

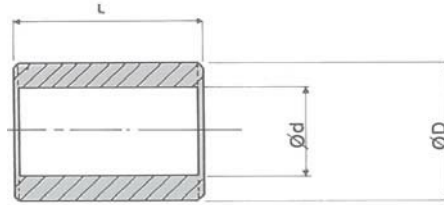
Metric: Plain.....	4
Metric: Flange.....	6
Imperial: Plain.....	7
Imperial: Flange.....	9

Bars: Cored & Solid, Metric & Imperial.....	10
---	----

PTFE Lined Steel Split Bush (including Glacier™)

Metric: Plain.....	11
Metric: Flange.....	14
Imperial: Plain.....	15
Thrust Washers and Strip - Metric & Imperial.....	16

Oil Impregnated Sintered Bronze Bushes Metric: Plain



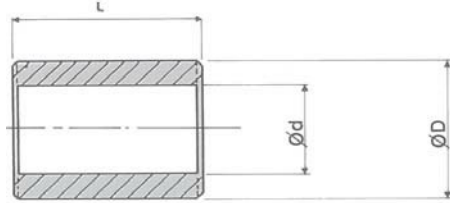
All dimensions in mm.

Ordering Example: AMC 0305 04 (for a 4mm long AMC 0305)

Type Ref.	Ød (G7)			ØD (s7)			Available Lengths
	Basic	Min.	Max.	Basic	Min	Max	
AMC 0103	1	1.002	1.012	3	3.014	3.024	02
	1.5	1.502	1.512	4	4.019	4.031	02
AMC 0205	2	2.002	2.012	5	5.019	4.031	02 03
	2.5	2.502	2.512	6	6.019	6.031	02 03
AMC 0305	3	3.002	3.012	5	5.019	5.031	03 04 06
AMC 0306	3	3.002	3.012	6	6.019	6.031	03 04
AMC 0407	4	4.004	4.016	7	7.023	7.038	03 04 06
AMC 0408	4	4.004	4.016	8	8.023	8.038	03 04 06 08 12
AMC 0508	5	5.004	5.016	8	8.023	8.038	04 05 08 10 12 16
AMC 0509	5	5.005	5.016	9	9.023	9.038	04 05 08
AMC 0609	6	6.004	6.016	9	10.023	10.038	04 06 10 12 16
AMC 0610	6	6.004	6.016	10	10.023	10.038	04 06 10 12 16
AMC 0710	7	7.005	7.020	10	10.023	10.038	05 08 10
AMC 0711	7	7.005	7.020	11	11.028	11.046	05 08 10
AMC 0811	8	8.005	8.020	11	11.028	11.046	06 08 12
AMC 0812	8	8.005	8.020	12	12.028	12.046	06 08 12 16 20
AMC 0814	8	8.005	8.020	14	14.028	14.046	08 12 16 20
AMC 0912	9	9.005	9.020	12	12.028	12.046	06 10 14
AMC 0914	9	9.005	9.020	14	14.028	14.046	10 14
AMC 1013	10	10.005	10.020	13	13.028	13.046	10 16
AMC 1014	10	10.005	10.020	14	14.028	14.046	08 10 16 20 25
AMC 1015	10	10.005	10.020	15	15.028	15.046	10 16 20 25
AMC 1016	10	10.005	10.020	16	16.028	16.046	08 10 16 20 25
AMC 1215	12	12.006	12.024	15	15.028	15.046	12 16 20 25
AMC 1216	12	12.006	12.024	16	16.028	16.046	08 12 16 20 25
AMC 1218	12	12.006	12.024	18	18.028	18.046	08 12 16 20 25
AMC 1418	14	14.006	14.024	18	18.028	18.046	10 14 20
AMC 1420	14	14.006	14.024	20	20.035	20.056	10 14 20 30
AMC 1519	15	15.006	15.024	19	19.035	19.056	10 15 20 25 30
AMC 1521	15	15.006	15.024	21	21.035	21.056	15 20 25
AMC 1620	16	16.006	16.024	20	20.035	20.056	12 16 20 25 30
AMC 1622	16	16.006	16.024	22	22.035	22.056	12 16 20 25 30
AMC 1822	18	18.006	18.024	22	22.035	22.056	12 08 30
AMC 1824	18	18.006	18.024	24	24.035	24.056	18 30
AMC 1825	18	18.006	18.024	25	25.035	25.056	22 30
AMC 2024	20	20.007	20.028	24	24.035	24.056	16 20 32
AMC 2025	20	20.007	20.028	25	25.035	25.056	15 20 25 30
AMC 2026	20	20.007	20.028	26	26.035	26.056	15 20 25 30
AMC 2028	20	20.007	20.028	28	28.035	28.056	25 30 50
AMC 2227	22	22.007	22.028	27	27.035	27.056	15 20 25

Oil Impregnated Sintered Bronze Bushes

Metric: Plain (continued)



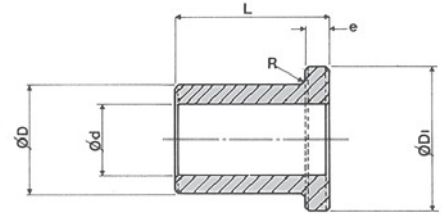
All dimensions in mm.

Ordering Example: AMC 2228 15 (for a 15mm long AMC 2228)

Type Ref.	Ød (G7)			ØD (s7)			Available Lengths
	Basic	Min.	Max.	Basic	Min	Max	
AMC 2228	22	22.007	22.028	28	28.035	28.056	15 20 25 30
AMC 2232	22	22.007	22.028	32	32.043	32.068	20 50
AMC 2530	25	25.007	25.028	30	30.035	30.056	20 25 30 50
AMC 2532	25	25.007	25.028	32	32.043	32.068	20 25 30 35 40
AMC 2535	25	25.007	25.028	35	35.043	35.068	25 35 50
AMC 2833	28	28.007	28.028	33	33.043	33.068	20 25 30
AMC 2836	28	28.007	28.028	36	36.043	36.068	20 25 30 40
AMC 3035	30	30.007	30.028	35	35.043	35.068	20 25 30
AMC 3038	30	30.007	30.028	38	38.043	38.068	20 25 30 40
AMC 3040	30	30.007	30.028	40	40.043	40.068	25 35 50
AMC 3238	32	32.009	32.034	38	38.043	38.068	20 25 30
AMC 3240	32	32.009	32.034	40	40.043	40.068	20 25 30 40 45
AMC 3541	35	35.009	35.034	41	41.043	41.068	25 35 40
AMC 3544	35	35.009	35.034	44	44.043	44.068	22 28 35
AMC 3545	35	35.009	35.034	45	45.043	45.068	25 35 40 50
AMC 3642	36	36.009	36.034	42	42.043	42.068	22 28 36 45
AMC 3645	36	36.009	36.034	45	45.043	45.068	22 28 26 45
AMC 3844	38	38.009	38.034	44	44.043	44.068	25 35 45
AMC 3848	38	38.009	38.034	48	48.043	48.068	25 35 45 55
AMC 4046	40	40.009	40.034	46	46.043	46.068	30 40 50
AMC 4050	40	40.009	40.034	50	50.043	50.068	25 30 35 40 50 60
AMC 4248	42	42.009	42.034	48	48.043	48.068	40 50

Type Ref.	Ød (G8)			ØD (s8)			Available Lengths
	Basic	Min.	Max.	Basic	Min	Max	
AMC 4252	42	42.009	42.048	52	52.053	52.099	30 50 60
AMC 4551	45	45.009	45.048	51	51.053	51.099	35 45 55
AMC4555	45	45.009	45.048	55	55.053	55.099	35 45 55 75
AMC 4556	45	45.009	48.048	56	56.053	56.099	26 28 45 56
AMC 4855	48	48.009	48.048	55	55.053	55.099	35 50
AMC 4858	48	48.009	48.048	58	58.053	58.099	50 70
AMC 5058	50	50.009	50.048	58	58.053	58.099	35 50
AMC 5060	50	50.009	50.048	60	60.053	60.099	30 35 40 50 63 70 75
AMC 5563	55	55.010	55.056	63	63.053	63.099	40 55
AMC 5565	55	55.010	55.056	65	65.053	65.099	40 55 70
AMC 6068	60	60.010	60.056	68	68.059	68.105	50 60
AMC 6070	60	60.010	60.056	70	70.059	70.105	50 60
AMC 6072	60	60.010	60.056	72	72.059	72.105	50 60 70
AMC 6370	63	63.010	63.056	70	70.059	70.105	40 50

Oil Impregnated Sintered Bronze Bushes Metric: Flange



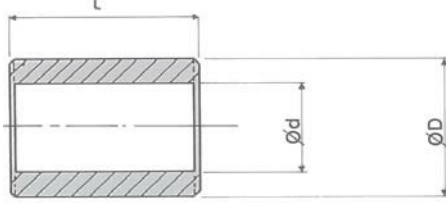
All dimensions in mm.

Ordering Example: AMF 0306 04 (for a 4mm long AMF 0306)

Type Ref.	Ød (G7)			ØD (s7)			ØD ₁	e	Available Lengths
	Basic	Min.	Max.	Basic	Min	Max			
AMF 0103	1	1.002	1.012	3	3.014	3.024	5	1	02
AMF 0205	1.5	1.502	1.512	4	4.019	4.031	6	1	02
	2	2.002	2.012	5	5.019	5.031	8	1.5	03
AMF 0306	2.5	2.502	2.512	6	6.019	6.031	9	1.5	03
	3	3.002	3.012	6	6.019	6.031	9	1.5	04
AMF 0408	4	4.004	4.016	8	8.023	8.038	12	2	03 04 06 08 12
AMF 0509	5	5.004	5.016	9	9.023	9.038	13	2	04 05 08
AMF 0610	6	6.004	6.016	10	10.023	10.038	14	2	04 06 10
AMF 0711	7	7.005	7.020	11	11.028	11.046	15	2	05 08
AMF 0812	8	8.005	8.020	12	12.028	12.046	16	2	06 08 12 16
AMF 0914	9	9.005	9.020	14	14.028	14.046	19	2.5	06 10 14
AMF 1013	10	10.005	10.020	13	13.028	13.046	17	2.5	10 16 20
AMF 1015	10	10.005	10.020	15	15.028	15.046	21	3	10 16 20
AMF 1016	10	10.005	10.020	16	16.028	16.046	22	3	08 10 16
AMF 1215	12	12.006	12.024	15	15.028	15.046	21	3	08 10 16
AMF 1217	12	12.006	12.024	17	17.028	17.046	23	3	12 16 20 25
AMF 1218	12	12.006	12.024	18	18.028	18.046	24	3	08 12 20
AMF 1420	14	14.006	14.024	20	20.035	20.056	26	3	10 14 20
AMF 1519	15	15.006	15.024	19	19.035	19.056	25	3	16 20 25
AMF 1521	15	15.006	15.024	21	21.035	21.056	27	3	10 15 20 25
AMF 1620	16	16.006	16.024	20	20.035	20.056	27	3	16 20 25
AMF 1622	16	16.006	16.024	22	22.035	22.056	28	3	12 16 20 25
AMF 1824	18	18.006	18.024	24	24.035	24.056	30	3	12 18 22 30
AMF 2024	20	20.007	20.028	24	24.035	24.056	30	3	16 20 25
AMF 2026	20	20.007	20.028	26	26.035	26.056	32	3	15 20 25 30
AMF 2228	22	22.007	22.028	28	28.035	28.056	34	3	15 20 25 30
AMF 2530	25	25.007	25.028	30	30.035	30.056	39	3.5	20 25 32
AMF 2532	25	25.007	25.028	32	32.043	32.068	39	3.5	20 25 30
AMF 2836	28	28.007	28.028	36	36.043	36.068	44	4	20 25 30
AMF 3038	30	30.007	30.028	38	38.043	38.068	46	4	20 25 30
AMF 3238	32	32.009	32.034	38	38.043	38.068	46	4	20 25 32
AMF 3240	32	32.009	32.034	40	40.043	40.068	48	4	20 25 30
AMF 3545	35	35.009	35.034	45	45.043	45.068	55	5	25 35 45
AMF 3848	38	38.009	38.034	48	48.043	48.068	58	5	25 35 45
AMF 4046	40	40.009	40.034	46	46.043	46.068	56	5	25 32 40
AMF 4050	40	40.009	40.034	50	50.043	50.068	60	5	25 30 40 50

Type Ref.	Ød (G8)			ØD (s8)			ØD ₁	e	Available Lengths
	Basic	Min.	Max.	Basic	Min	Max			
AMF 4252	42	42.009	42.048	52	52.053	52.099	62	5	30 40 50
AMF 4555	45	45.009	45.048	55	55.053	55.099	65	5	35 45 55
AMF 5060	50	50.009	50.048	60	60.053	60.099	70	5	32 40 50

Oil Impregnated Sintered Bronze Bushes Imperial: Plain



All dimensions in inches.

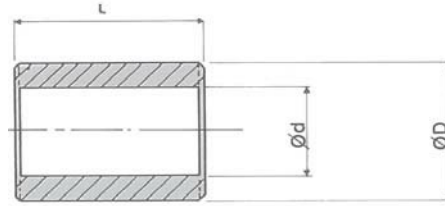
Type Ref.	Ød			ØD			Available Lengths
	Basic	Min.	Max.	Basic	Min	Max	
AIC 0305	3/16	0.1883	0.1888	5/16	0.3137	0.3142	1/4 3/8 1/2 5/8 3/4
AIC 0406	1/4	0.2508	0.2513	3/8	0.3767	0.3772	1/4 3/8 1/2 5/8 3/4
AIC 0407	1/4	0.2501	0.2506	7/16	0.4385	0.4390	1/4 3/8 1/2 5/8 3/4
AIC 0408	1/4	0.2507	0.2512	1/2	0.5020	0.5025	3/8 1/2 3/4
AIC 0507	5/16	0.3132	0.3137	7/16	0.4390	0.4395	5/16 3/8 1/2 9/16 5/8 3/4 1
AIC 0508	5/16	0.3132	0.3137	1/2	0.5017	0.5022	1/4 3/8 1/2 5/8 3/4
AIC 0608	3/8	0.3757	0.3762	1/2	0.5020	0.5025	3/8 1/2 5/8 3/4 7/8 1 1 1/8 1 1/4
AIC 0610	3/8	0.3754	0.3759	5/8	0.6260	0.6270	3/8 1/2 5/8 3/4 7/8 1
AIC 0709	7/16	0.4382	0.4387	9/16	0.5637	0.5647	3/8 1/2 5/8 3/4
AIC 0711	7/16	0.4383	0.4388	11/16	0.6890	0.6900	3/8 1/2 1 1/4
AIC 0810	1/2	0.5008	0.5013	5/8	0.6265	0.6275	3/8 1/2 5/8 3/4 7/8 1 1 1/8 1 1/4
AIC 0811	1/2	0.5015	0.5020	11/16	0.6895	0.6905	1/2 5/8 3/4 7/8 1
AIC 0812	1/2	0.5015	0.5020	3/4	0.7525	0.7535	1/2 5/8 3/4 1 1 1/4 2
AIC 0911	9/16	0.5628	0.5638	11/16	0.6890	0.6900	1/2 5/8 3/4 1 1 1/4
AIC 0912	9/16	0.5640	0.5650	3/4	0.7520	0.7530	1
AIC 1012	5/8	0.6255	0.6265	3/4	0.7515	0.7525	1/2 5/8 3/4 7/8 1 1 1/4
AIC 1013	5/8	0.6265	0.6275	13/16	0.8145	0.8155	3/4 1 1 1/4 1 3/8
AIC 1014	5/8	0.6255	0.6265	7/8	0.8770	0.8780	1/2 5/8 3/4 7/8 1 1 1/8 1 1/4
AIC 1115	11/16	0.6881	0.6891	15/16	0.9393	0.9403	7/8 1 1/4
AIC 1214	3/4	0.7505	0.7515	7/8	0.8765	0.8775	1/2 5/8 3/4 1 1 1/8 1 1/4
AIC 1215	3/4	0.7535	0.7545	15/16	0.9405	0.9415	3/4 1
AIC 1216	3/4	0.7508	0.7518	1	1.0020	1.0030	5/8 3/4 7/8 1 1 1/8 1 1/4
AIC 1218	3/4	0.7525	0.7535	1 1/8	1.1280	1.1290	3/4 1 1 1/4
AIC 1220	3/4	0.7525	0.7535	1 1/4	1.2535	1.2545	1 1/8 1 3/8 1 1/2 2
AIC 1416	7/8	0.8755	0.8765	1	1.0017	1.0027	3/4 1 1 1/8 1 1/4 1 1/2
AIC 1418	7/8	0.8757	0.8767	1 1/8	1.1270	1.1280	3/4 7/8 1 1 1/8 1 1/4 1 1/2
AIC 1618	1	1.0008	1.0018	1 1/8	1.1270	1.1280	3/4 1 1 1/4 1 1/2
AIC 1620	1	1.0010	1.0020	1 1/4	1.2526	1.2536	5/8 7/8 1 1 1/8 1 1/4 1 3/8 1 1/2 1 5/8 1 3/4 2
AIC 1624	1	1.0025	1.0035	1 1/2	1.5040	1.5050	1 3/8 1 1/2 1 3/4 2
AIC 1822	1 1/8	1.1258	1.1268	1 3/8	1.3770	1.3780	3/4 1 1 1/4 1 1/2 1 3/4 2
AIC 2024	1 1/4	1.2515	1.2525	1 1/2	1.5030	1.5040	1 1 1/4 1 3/8 1 1/2 1 3/4 1 7/8 2
AIC 2026	1 1/4	1.2525	1.2535	1 5/8	1.6287	1.6302	1 1 1/4 1 1/2 1 3/4 2 2 1/4 2 1/2
AIC 2226	1 3/8	1.3762	1.3722	1 5/8	1.6275	1.6290	1 1/4 1 1/2 1 3/4 2
AIC 2228	1 3/8	1.3775	1.3785	1 3/4	1.7545	1.7560	1 1/2 2 1/4
AIC 2428	1 1/2	1.5013	1.5023	1 3/4	1.7527	1.7542	1 1/4 1 1/2 1 3/4 2 2 1/4
AIC 2430	1 1/2	1.5025	1.5035	1 7/8	1.8790	1.8805	1 1/4 1 1/2 1 3/4 2 2 1/4
AIC 2432	1 1/2	1.5025	1.5035	2	2.0030	2.0045	1 1/2 2 2 1/2 3
AIC 2633	1 1/8	1.6285	1.6300	2 1/16	2.0675	2.0690	1 7/8 2 2 1/2
AIC 2832	1 3/4	1.7510	1.7525	2	2.0030	2.0045	1 1/4 1 1/2 1 3/4 2 2 1/4
AIC 2836	1 3/4	1.7510	1.7525	2 1/4	2.2530	2.2550	1 1/2 1 3/4 2 2 1/4

Please use the following table when ordering to ensure the correct length code:

- 04 = 1/4
- 05 = 5/16
- 06 = 3/8
- 08 = 1/2
- 09 = 9/16
- 10 = 5/8
- 12 = 3/4
- 14 = 7/8
- 16 = 1
- 18 = 1 1/8
- 20 = 1 1/4
- 22 = 1 3/8
- 24 = 1 1/2
- 26 = 1 5/8
- 28 = 1 3/4
- 30 = 1 7/8
- 32 = 2
- 36 = 2 1/4
- 40 = 2 1/2
- 48 = 3

For example:
AIC 0305 06, for the
3/8" long AIC 0305

Oil Impregnated Sintered Bronze Bushes Imperial: Plain (continued)



All dimensions in inches.

Type Ref.	Ød			ØD			Available Lengths
	Basic	Min.	Max.	Basic	Min	Max	
AIC 3236	2	2.0010	2.0025	2 1/4	2.2530	2.2550	1 ¹ / ₂ 1 ³ / ₄ 2 2 ¹ / ₄ 2 ¹ / ₂
AIC 3240	2	2.0010	2.0025	2 1/2	2.5035	2.5055	1 ¹ / ₂ 1 ³ / ₄ 2 2 ¹ / ₄ 2 ¹ / ₂ 3
AIC 3642	2 1/4	2.2530	2.2550	2 5/8	2.6285	2.6305	2 ¹ / ₂ 3
AIC 3644	2 1/4	2.2510	2.2530	2 3/4	2.7540	2.7560	1 ¹ / ₂ 2 2 ¹ / ₄ 2 ¹ / ₂
AIC 4046	2 1/2	2.5030	2.5050	2 7/8	2.8795	2.8815	2 2 ¹ / ₂ 3
AIC 4048	2 1/2	2.5015	2.5035	3	3.0045	3.0065	1 ¹ / ₂ 2 2 ¹ / ₂ 3
AIC 4856	3	2.9980	3.0000	3 1/2	3.5020	3.5040	2 ¹ / ₂ 3

Secondary Sizes

Type Ref.	Ød			ØD			Available Lengths
	Basic	Min.	Max.	Basic	Min	Max	
AIC 121624FA	3/4	0.7522	0.7532	1	1.0025	1.0035	1 ¹ / ₂
AIC 121628FA	3/4	0.7522	0.7532	1	1.0025	1.0035	1 ³ / ₄
AIC 121632FA	3/4	0.7522	0.7532	1	1.0025	1.0035	2
AIC 121610FB	3/4	0.7515	0.7525	1	1.0020	1.0030	5/8
AIC 121614FB	3/4	0.7515	0.7525	1	1.0020	1.0030	7/8
AIC 121620FB	3/4	0.7515	0.7525	1	1.0020	1.0030	1 ¹ / ₄

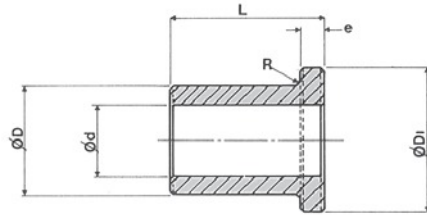
Please use the following table when ordering to ensure the correct length code:

04 = 1/4	05 = 5/16	06 = 3/8
08 = 1/2	09 = 9/16	10 = 5/8
12 = 3/4	14 = 7/8	16 = 1
18 = 1 1/8	20 = 1 1/4	22 = 1 3/8
24 = 1 1/2	26 = 1 5/8	28 = 1 3/4
30 = 1 7/8	32 = 2	36 = 2 1/4
40 = 2 1/2	48 = 3	

For example:

AIC 3236 24, for the 1 1/2" long AIC 3236

Oil Impregnated Sintered Bronze Bushes Imperial: Flange



All dimensions in inches.

Type Ref.	Ød			ØD			ØD ₁	e	Available Lengths
	Basic	Min.	Max.	Basic	Min	Max			
AIF 0305	3/16	0.1880	0.1885	5/16	0.3137	0.3142	0.3750	0.062	1/4 3/8 1/2
AIF 0406	1/4	0.2505	0.2510	3/8	0.3767	0.3722	0.5000	0.062	1/4 3/8 1/2 3/4
AIF 0508	5/16	0.3130	0.3135	1/2	0.5020	0.5025	0.6250	0.062	1/4 3/8 1/2 3/4
AIF 0509	5/16	0.3120	0.3125	9/16	0.5640	0.5650	0.6562	0.125	3/8 5/8 3/4
AIF 0608	3/8	0.3755	0.3760	1/2	0.5015	0.5020	0.6250	0.062	1/2 7/8
AIF 0609	3/8	0.3747	0.3752	9/16	0.5640	0.5650	0.7500	0.062	1/2
AIF 0610	3/8	0.3757	0.3762	5/8	0.6265	0.6275	0.7500	0.125	3/8 1/2 5/8 3/4
AIF 0709	7/16	0.4401	0.4406	9/16	0.5641	0.5651	0.7500	0.062	1/2 3/4 1
AIF 0810	1/2	0.5000	0.5005	5/8	0.6265	0.6275	0.7500	0.098	1/2 1
AIF 0812	1/2	0.5008	0.5013	3/4	0.7417	0.7527	1.0000	0.125	1/2 3/4 1 1 1/8
AIF 1012	5/8	0.6275	0.6285	3/4	0.7525	0.7535	1.1250	0.094	1/2 1 1 1/8
AIF 1014	5/8	0.6255	0.6265	7/8	0.8770	0.8780	1.2500	0.125	1/2 3/4 1 1 1/8
AIF 1216	3/4	0.7508	0.7518	1	1.0020	1.0030	1.3750	0.125	3/4 1 1 1/4 1 1/2
AIF 1416	7/8	0.8755	0.8765	1	1.0017	1.0027	1.2500	0.125	1
AIF 1418	7/8	0.8757	0.8767	1 1/8	1.1270	1.1280	1.6250	0.125	3/4 1 1 1/4 1 1/2
AIF 1620	1	1.0010	1.0020	1 1/4	1.2526	1.2536	1.7500	0.125	1 1 1/4 1 1/2 1 3/4 2
AIF 1822	1 1/8	1.1260	1.1270	1 3/8	1.3776	1.3786	1.8750	0.125	1 1 1/4 1 1/2 1 3/4
AIF 2024	1 1/4	1.2510	1.2520	1 1/2	1.5030	1.5040	1.8750	0.125	3/4 1 1/4 1 1/2
AIF 2026	1 1/4	1.2516	1.2526	1 5/8	1.6280	1.6295	2.0000	0.125	1 1 1/4 1 1/2 1 3/4
AIF 2226	1 3/8	1.3745	1.3755	1 5/8	1.6270	1.6285	1.8770	0.125	3/4 1 1/4
AIF 2428	1 1/2	1.5016	1.5026	1 3/4	1.7510	1.7525	1.8700	0.120	1 1/2 1 7/8
AIF 2430	1 1/2	1.5016	1.5026	1 7/8	1.8780	1.8795	2.5000	0.188	1 1/4 1 1/2 1 3/4 2

Please use the following table when ordering to ensure the correct length code:

- 04 = 1/4
- 05 = 5/16
- 06 = 3/8
- 08 = 1/2
- 09 = 9/16
- 10 = 5/8
- 12 = 3/4
- 14 = 7/8
- 16 = 1
- 18 = 1 1/8
- 20 = 1 1/4
- 22 = 1 3/8
- 24 = 1 1/2
- 26 = 1 5/8
- 28 = 1 3/4
- 30 = 1 7/8
- 32 = 2
- 36 = 2 1/4
- 40 = 2 1/2
- 48 = 3

Secondary Sizes

For example:
AIF 0305 04, for the
1/4" long AIF 0305

Type Ref.	Ød			ØD			ØD ₁	e	Available Lengths
	Basic	Min.	Max.	Basic	Min	Max			
AIF 060808FA	3/8	0.3755	0.3760	1/2	0.5020	0.5025	0.6250	0.140	1/2
AIF 060812FA	3/8	0.3755	0.3760	1/2	0.5020	0.5025	0.6250	0.140	3/4
AIF 060814FA	3/8	0.3755	0.3760	1/2	0.5020	0.5025	0.6250	0.140	7/8
AIF 162012FA	1	1.0010	1.0020	1 1/4	1.2520	1.2530	1.5000	0.125	3/4
AIF 162016FA	1	1.0010	1.0020	1 1/4	1.2520	1.2530	1.5000	0.125	1
AIF 162018FA	1	1.0010	1.0020	1 1/4	1.2520	1.2530	1.5000	0.125	1 1/8
AIF 162024FA	1	1.0010	1.0020	1 1/4	1.2520	1.2530	1.5000	0.125	1 1/2

Cored Bars

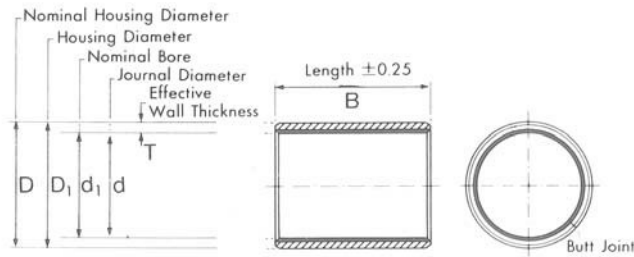
Imperial (inches)			Metric Equiv. (mm)		
Bore	Outside Diameter	Length	Bore	Outside Diameter	Length
1/2	1	6 1/2	12.7	25.4	165
1/2	1 1/2	6 1/2	12.7	38.1	165
5/8	1 3/8	6 1/2	15.88	34.9	165
5/8	1 1/2	6 1/2	15.88	38.1	165
3/4	2	6 1/2	19.05	50.8	165
7/8	1 1/2	6 1/2	22.23	38.1	165
7/8	2	6 1/2	22.23	50.8	165
7/8	2 1/4	6 1/2	22.23	57.2	165
1	2	6 1/2	25.4	50.8	165
1	3	6 1/2	25.4	76.2	165
1 1/2	3	6 1/2	38.1	76.2	165
2	3	6 1/2	50.8	76.2	165
2	4	6 1/2	50.8	101.6	165
2 1/2	4	6 1/2	63 1/2	101.6	165
3 3/4	5	6 1/2	95 1/4	127.0	165
4	6	6 1/2	101.6	152.4	165

Solid Bars

Imperial (inches)		Metric Equiv. (mm)	
Outside Diameter	Length	Outside Diameter	Length
3/8	3	9.5	76.2
1/2	6 1/2	12.7	165
0.787	2.047	20	52
1	6 1/2	25.4	165
1 1/2	6 1/2	38.1	165
1.574	2.047	40	52
2	6 1/2	50.8	165
2.362	2.362	60	60
3.149	3.149	80	80
6	6 1/2	152	165

PTFE Lined Steel Split Bush

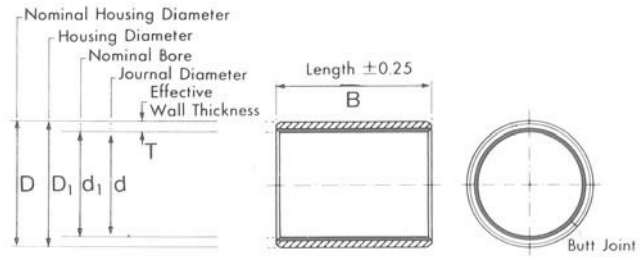
Metric: Plain



All dimensions in mm.

d ₁	D	d	D ₁	T	B					
2	3.50	2.000 1.994	3.500 3.508	0.750 0.730	3 MB 0203DU	5 MB 0205DU				
3	4.50	3.000 2.994	4.500 4.508		3 MB 0303DU	5 MB 0305DU	6 MB 0306DU			
4	5.50	4.000 3.992	5.500 5.508		3 MB 0403DU	4 MB 0404DU	6 MB 0406DU	10 MB 0410DU		
5	7.00	4.990 4.978	7.000 7.015	1.005 0.980	5 MB 0505DU	8 MB 0508DU	10 MB 0510DU			
6	8.00	5.990 5.978	8.000 8.015		6 MB 0606DU	8 MB 0608DU	10 MB 0610DU			
7	9.00	6.987 6.972	9.000 9.015		10 MB 0710DU					
8	10.00	7.987 7.972	10.000 10.015		8 MB 0808DU	10 MB 0810DU	12 MB 0812DU			
10	12.00	9.987 9.972	12.000 12.018		8 MB 1008DU	10 MB 1010DU	12 MB 1012DU	15 MB 1015DU	20 MB 1020DU	
12	14.00	11.984 11.966	14.000 14.018		8 MB 1208DU	10 MB 1210DU	12 MB 1212DU	15 MB 1215DU	20 MB 1220DU	25 MB 1225DU
13	15.00	12.984 12.966	15.000 15.018		10 MB 1310DU	20 MB 1320DU				
14	16.00	13.984 13.966	16.000 16.018		5 MB 1405DU	10 MB 1410DU	12 MB 1412DU	15 MB 1415DU	20 MB 1420DU	25 MB 1425DU
15	17.00	14.984 14.966	17.000 17.018		10 MB 1510DU	12 MB 1512DU	15 MB 1515DU	20 MB 1520DU	25 MB 1525DU	
16	18.00	15.984 15.966	18.000 18.018		10 MB 1610DU	12 MB 1612DU	15 MB 1615DU	20 MB 1620DU	25 MB 1625DU	
17	19.00	16.984 16.966	19.000 19.021		20 MB 1720DU					
18	20.00	17.984 17.966	20.000 20.021		15 MB 1815DU	20 MB 1820DU	25 MB 1825DU			
20	23.00	19.980 19.959	23.000 23.021		1.505 1.475	10 MB 2010DU	15 MB 2015DU	20 MB 2020DU	25 MB 2025DU	30 MB 2030DU
22	25.00	21.980 21.959	25.000 25.021			15 MB 2215DU	20 MB 2220DU	25 MB 2225DU	30 MB 2230DU	
24	27.00	23.980 23.959	27.000 27.021	15 MB 2415DU		20 MB 2420DU	25 MB 2425DU	30 MB 2430DU		
25	28.00	24.980 24.959	28.000 28.021	15 MB 2515DU		20 MB 2520DU	25 MB 2525DU	30 MB 2530DU	50 MB 2550DU	
28	32.00	27.980 27.959	32.000 32.025	15 MB 2815DU		20 MB 2820DU	25 MB 2825DU	30 MB 2830DU		
30	34.00	29.980 29.959	34.000 34.025	15 MB 3015DU		20 MB 3020DU	25 MB 3025DU	30 MB 3030DU	40 MB 3040DU	
32	36.00	31.975 31.950	36.000 36.025	2.005 1.970	20 MB 3220DU	30 MB 3230DU	40 MB 3240DU			
35	39.00	34.975 34.950	39.000 39.025		20 MB 3520DU	30 MB 3530DU	35 MB 3535DU	40 MB 3540DU	50 MB 3550DU	
37	41.00	36.975 36.950	41.000 41.025		20 MB 3720DU					
40	44.00	39.975 39.950	44.000 44.025		20 MB 4020DU	30 MB 4030DU	40 MB 4040DU	50 MB 4050DU		

PTFE Lined Steel Split Bush Metric: Plain (continued)

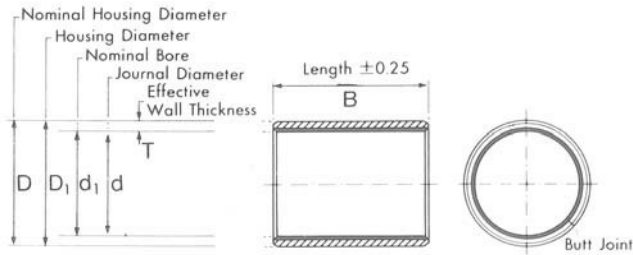


All dimensions in mm.

d_1	D	d	D_1	T	B							
45	50.00	44.975 44.950	50.000 50.025	2.505 2.460	20 MB	30 MB	40 MB	45 MB	50 MB			
					4520DU	4530DU	4540DU	4545DU	4550DU			
50	55.00	49.975 49.950	55.000 55.030		20 MB	30 MB	40 MB	50 MB	60 MB			
					5020DU	5030DU	5040DU	5050DU	5060DU			
55	60.00	54.970 54.940	60.000 60.030		20 MB	25 MB	30 MB	40 MB				
					5520DU	5525DU	5530DU	5540DU				
								50 MB	55 MB	60 MB		
								5550DU	5555DU	5560DU		
60	65.00	59.970 59.940	65.000 65.030		20 MB	30 MB	40 MB	60 MB	70 MB			
					6020DU	6030DU	6040DU	6060DU	6070DU			
65	70.00	64.970 64.940	70.000 70.030	30 MB	50 MB	70 MB						
				6530DU	6550DU	6570DU						
70	75.00	69.970 69.940	75.000 75.030	40 MB	50 MB	70 MB						
				7040DU	7050DU	7070DU						
75	80.00	74.970 74.940	80.000 80.030	60 MB	80 MB							
				7560DU	7580DU							
80	85.00	80.000 79.954	85.000 85.035	60 MB	100 MB							
				8060DU	80100DU							
85	90.00	85.000 84.946	90.000 90.035	30 MB	60 MB	100 MB						
				8530DU	8560DU	85100DU						
90	95.00	90.000 89.946	95.000 95.035	60 MB	100 MB							
				9060DU	90100DU							
95	100.00	95.000 94.946	100.000 100.035	60 MB	100 MB							
				9560DU	95100DU							
100	105.00	100.000 99.946	105.000 105.035	60 MB	115 MB							
				10060DU	100115DU							
105	110.00	105.000 104.946	110.000 110.035	60 MB	115 MB							
				10560DU	105115DU							
110	115.00	110.000 109.946	115.000 115.035	60 MB	115 MB							
				11060DU	110115DU							
115	120.00	115.000 114.946	120.000 120.035	50 MB	70 MB							
				11550DU	11570DU							
120	125.00	120.000 119.946	125.000 125.040	50 MB	60 MB	100 MB						
				12050DU	12060DU	120100DU						
125	130.00	125.000 124.937	130.000 130.040	100 MB								
				125100DU								
130	135.00	130.000 129.937	135.000 135.040	60 MB	100 MB							
				13060DU	130100DU							
135	140.00	135.000 134.937	140.000 140.040	60 MB	80 MB							
				13560DU	13580DU							
140	145.00	140.000 139.937	145.000 145.040	60 MB	100 MB							
				14060DU	140100DU							
150	155.00	150.000 149.937	155.000 155.040	60 MB	80 MB	100 MB						
				15060DU	15080DU	150100DU						
160	165.00	160.000 159.937	165.000 165.040	80 MB	100 MB							
				16080DU	160100DU							
170	175.00	170.000 169.937	175.000 175.040									
180	185.00	180.000 179.937	185.000 185.046	100 MB								
				180100DU								

PTFE Lined Steel Split Bush

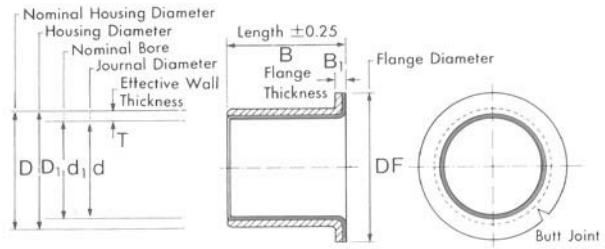
Metric: Plain (continued)



All dimensions in mm.

d ₁	D	d	D ₁	T	B																		
190	195.00	190.000	195.000	2.465 2.415																			
		189.928	195.046																				
200	205.00	200.000	205.000			2.465 2.415	100 MB 200100DU																
		199.928	205.046																				
210	215.00	210.000	215.000					2.465 2.415	100 MB 210100DU														
		209.928	215.046																				
220	225.00	220.000	225.000							2.465 2.415	100 MB 220100DU												
		219.928	225.046																				
230	235.00	230.000	235.000									2.465 2.415											
		229.928	235.046																				
240	245.00	240.000	245.000											2.465 2.415									
		239.928	245.046																				
250	255.00	250.000	255.000													2.465 2.415	100 MB 250100DU						
		249.928	255.052																				
260	265.00	260.000	265.000															2.465 2.415					
		259.919	265.052																				
270	275.00	270.000	275.000																	2.465 2.415			
		269.919	275.052																				
280	285.00	280.000	285.000																			2.465 2.415	
		279.919	285.052																				
290	295.00	290.000	295.000	2.465 2.415																			
		289.919	295.052																				
300	305.00	300.000	305.000			2.465 2.415	100 MB 300100DU																
		299.919	305.052																				
320	325.00	319.938	325.000					2.465 2.415															
		319.849	325.057																				
340	345.00	339.938	345.000							2.465 2.415													
		339.849	345.057																				
360	365.00	359.938	365.000									2.465 2.415											
		359.849	365.057																				
380	385.00	379.938	385.000											2.465 2.415									
		379.849	385.057																				
400	405.00	399.938	405.000													2.465 2.415							
		399.849	405.059																				

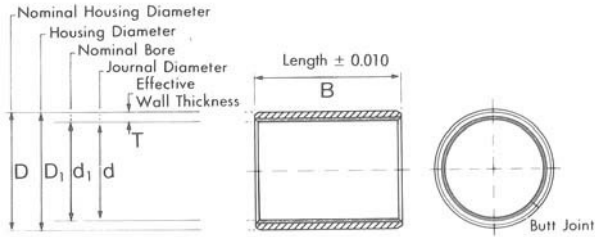
PTFE Lined Steel Split Bush Metric: Flange



All dimensions in mm.

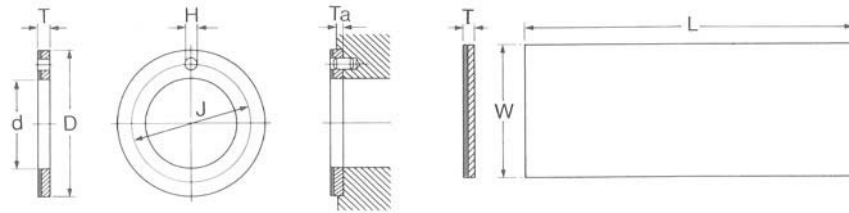
d ₁	D	DF	d	D ₁	B ₁	T	B												
6	8.00	12.00	5.990	8.014	1.000	1.005	4	FMB	8	FMB									
			5.978	8.000				0604DU		0608DU									
8	10.00	15.00	7.987	10.015			0.800	0.980	5.5	FMB				7.5	FMB	9.5	FMB		
			7.972	10.000						0805.5DU					0807.5DU		0809.5DU		
10	12.00	18.00	9.987	12.018			0.800	0.980	7	FMB				9	FMB	12	FMB	17	FMB
			9.972	12.000						1007DU					1009DU		1012DU		1017DU
12	14.00	20.00	11.984	14.018			0.800	0.980	7	FMB				9	FMB	12	FMB	17	FMB
			11.966	14.000						1207DU					1209DU		1212DU		1217DU
14	16.00	22.00	13.984	16.018			0.800	0.980	12	FMB				17	FMB				
			13.966	16.000						1412DU					1417DU				
15	17.00	23.00	14.984	17.018			0.800	0.980	9	FMB				12	FMB	17	FMB		
			14.966	17.000						1509DU					1512DU		1517DU		
16	18.00	24.00	15.984	18.018	0.800	0.980	12	FMB	17	FMB									
			15.966	18.000				1612DU		1617DU									
18	20.00	26.00	17.984	20.021	0.800	0.980	12	FMB	17	FMB	22	FMB							
			17.966	20.000				1812DU		1817DU		1822DU							
20	23.00	30.00	19.980	23.021	1.500	1.505	11.5	FMB	16.5	FMB	21.5	FMB							
			19.959	23.000				2011.5DU		2016.5DU		2021.5DU							
25	28.00	35.00	24.980	28.021	1.300	1.475	11.5	FMB	16.5	FMB	21.5	FMB							
			24.959	28.000				2511.5DU		2516.5DU		2521.5DU							
30	34.00	42.00	29.980	34.025	2.000	2.005	16	FMB	26	FMB									
			29.959	34.000				3016DU		3026DU									
35	39.00	47.00	34.975	39.025	1.800	1.970	16	FMB	26	FMB									
			34.950	39.000				3516DU		3526DU									
40	44.00	52.00	39.975	44.025	1.800	1.970	16	FMB	26	FMB									
			39.950	44.000				4016DU		4026DU									

PTFE Lined Steel Split Bush Imperial: Plain



All dimensions in inches.

d_1	D	d	D_1	T	B								
$1/8$	$3/16$	0.1243	0.1873	0.0315 0.0305	$1/8$	02DU02	$3/16$	02DU03					
		0.1236	0.1878										
$5/32$	$7/32$	0.1554	0.2186		$5/32$	025DU025	$1/4$	025DU04					
		0.1547	0.2191										
$3/16$	$1/4$	0.1865	0.2497		$3/16$	03DU03	$1/4$	03DU04	$3/8$	03DU06			
		0.1858	0.2503										
$1/4$	$5/16$	0.2490	0.3122		$1/4$	04DU04	$3/8$	04DU06					
		0.2481	0.3128										
$5/16$	$3/8$	0.3115	0.3747		$3/8$	05DU06	$1/2$	05DU08					
		0.3106	0.3753										
$3/8$	$15/32$	0.3740	0.4684		$3/4$	06DU06	$1/2$	06DU08	$3/4$	06DU12			
		0.3731	0.4691										
$7/16$	$17/32$	0.4365	0.5309		$1/2$	07DU08	$3/4$	17DU12					
		0.4355	0.5316										
$1/2$	$19/32$	0.4990	0.5934		0.0471 0.0461	$3/8$	08DU06	$1/2$	08DU08	$5/8$	08DU10	$7/8$	08DU14
		0.4980	0.5941										
$9/16$	$21/32$	0.5615	0.6559	$1/2$		09DU08	$3/4$	09DU12					
		0.5605	0.6566										
$5/8$	$23/32$	0.6240	0.7184	$1/2$		10DU08	$5/8$	10DU10	$3/4$	10DU12	$7/8$	10DU14	
		0.6230	0.7192										
$11/16$	$25/32$	0.6865	0.7809	$7/8$		11DU14							
		0.6855	0.7817										
$3/4$	$7/8$	0.7491	0.8747	0.0627 0.0615		$1/2$	12DU08	$3/4$	12DU12	1	12DU16		
		0.7479	0.8755										
$7/8$	1	0.8741	0.9997			$3/4$	14DU12	$7/8$	14DU14	1	14DU16		
		0.8729	1.0005										
1	$1 1/8$	0.9991	1.1246			$3/4$	16DU12	1	16DU16	$1 1/2$	16DU24		
		0.9979	1.1256										
$1 1/8$	$1 9/32$	1.1238	1.2808			$3/4$	18DU12	1	18DU16				
		1.1226	1.2818										
$1 1/4$	$1 13/32$	1.2488	1.4058		0.0784 0.0770	$3/4$	20DU12	1	20DU16	$1 1/4$	20DU20	$1 3/4$	20DU28
		1.2472	1.4068										
$1 3/8$	$1 17/32$	1.3738	1.5308			1	22DU16	$1 3/8$	22DU22	$1 3/4$	22DU28		
		1.3722	1.5318										
$1 1/2$	$1 21/32$	1.4988	1.6558			1	24DU16	$1 1/4$	24DU20	$1 1/2$	24DU24	2	24DU32
		1.4972	1.6568										
$1 5/8$	$1 25/32$	1.6238	1.7808			1	26DU16	$1 1/2$	26DU24				
		1.6222	1.7818										
$1 3/4$	$1 15/16$	1.7487	1.9371	1		28DU16	$1 1/2$	28DU24	$1 3/4$	28DU28	2	28DU32	
		1.7471	1.9381										
$1 7/8$	$2 1/16$	1.8737	2.0621	0.0941 0.0923		1	30DU16	$1 7/8$	30DU30	$2 1/4$	30DU36		
		1.8721	2.0633										
2	$2 3/16$	1.9987	2.1871			1	32DU16	$1 1/2$	32DU24	2	32DU32	$2 1/2$	32DU40
		1.9969	2.1883										
$2 1/4$	$2 7/16$	2.2507	2.4365			2	36DU32	$2 1/4$	36DU36	$2 1/2$	36DU40	3	36DU48
		2.2489	2.4377										
$2 1/2$	$2 11/16$	2.5011	2.6869		2	40DU32	$2 1/2$	40DU40	3	40DU48	$3 1/2$	40DU56	
		2.4993	2.6881										
$2 3/4$	$2 15/16$	2.7500	2.9358		2	44DU32	$2 1/2$	44DU40	3	44DU48	$3 1/2$	44DU56	
		2.7482	2.9370										
3	$3 3/16$	3.0000	3.1858		2	48DU32	3	48DU48	$3 3/4$	48DU60			
		2.9982	3.1872										
$3 1/2$	$3 11/16$	3.5000	3.6858		0.0928 0.0902	$2 1/2$	56DU40	3	56DU48	$3 3/4$	56DU60		
		3.4978	3.6872										
4	$4 3/16$	4.0000	4.1858			3	64DU48	$3 3/4$	64DU60	$4 3/4$	64DU76		
		3.9978	4.1872										
5	$5 3/16$	4.9986	5.1844	3		80DU48	$3 3/4$	80DU60					
		4.9961	5.1860										
6	$6 3/16$	6.0000	6.1858	3		96DU48	$3 3/4$	96DU60					
		5.9975	6.1874										
7	$7 3/16$	6.9954	7.1812	$3 3/4$		112DU60							
		6.9929	7.1830										



Thrust Washers: Metric

Part No.	d	D	T	H	J	Ta
WC08DU	10.00	20.00	1.50	No Hole		0.95
	10.25	19.75	1.45			1.20
WC10DU	12.00	24.00	1.50	1.625	18.12	0.95
	12.25	23.75	1.45	1.875	17.88	1.20
WC12DU	14.00	26.00	1.50	2.125	22.12	0.95
	14.25	25.75	1.45	2.375	19.88	1.20
WC14DU	16.00	30.00	1.50	2.125	22.12	0.95
	16.25	29.75	1.45	2.375	21.88	1.20
WC16DU	18.00	32.00	1.50	2.125	25.12	0.95
	18.25	31.75	1.45	2.375	24.88	1.20
WC18DU	20.00	36.00	1.50	3.125	28.12	0.95
	20.25	35.75	1.45	3.375	27.88	1.20
WC20DU	22.00	38.00	1.50	3.125	30.12	0.95
	22.25	37.75	1.45	3.375	29.88	1.20
WC22DU	24.00	42.00	1.50	3.125	33.12	0.95
	24.25	41.75	1.45	3.375	32.88	1.20
WC24DU	26.00	44.00	1.50	3.125	35.12	0.95
	26.25	43.75	1.45	3.375	34.88	1.20
WC25DU	28.00	48.25	1.50	4.125	38.12	0.95
	28.25	47.75	1.45	4.375	37.88	1.20
WC30DU	32.00	54.00	1.50	4.125	43.12	0.95
	32.25	53.75	1.45	4.375	42.88	1.20
WC35DU	38.00	62.00	1.50	4.125	50.12	0.95
	38.25	61.75	1.45	4.375	49.88	1.20
WC40DU	42.00	66.00	1.50	4.125	54.12	0.95
	42.25	65.75	1.45	4.375	53.88	1.20
WC45DU	48.00	74.00	2.00	4.125	61.12	1.45
	48.25	73.75	1.95	4.375	60.88	1.70
WC50DU	52.00	78.00	2.00	4.125	65.12	1.45
	52.25	77.75	1.95	4.375	64.88	1.70
WC60DU	62.00	90.00	2.00	4.125	76.12	1.45
	62.25	89.75	1.95	4.375	75.88	1.70

Strip: Metric

Metric Sizes In lengths (L) of approx. 500mm		
Part No.	T +0/-0.04 mm	W mm
075150DU	0.75	150
100200DU	1.00	200
150240DU	1.50	240
200240DU	2.00	240
250240DU	2.50	240
306240DU	3.06	240

All dimensions in mm.

Thrust Washers: Imperial

DU06	0.500	0.875	0.063	0.067	0.692	0.040
	0.510	0.865	0.061	0.077	0.682	0.050
DU07	0.562	1.000	0.063	0.067	0.786	0.040
	0.572	0.990	0.061	0.077	0.776	0.050
DU08	0.625	1.125	0.063	0.099	0.880	0.040
	0.635	1.115	0.061	0.109	0.870	0.050
DU09	0.687	1.187	0.063	0.099	0.942	0.040
	0.697	1.177	0.061	0.109	0.932	0.050
DU10	0.750	1.250	0.063	0.099	1.005	0.040
	0.760	1.240	0.061	0.109	0.885	0.050
DU11	0.812	1.375	0.063	0.099	1.099	0.040
	0.822	1.365	0.061	0.109	1.089	0.050
DU12	0.875	1.500	0.063	0.130	1.192	0.040
	0.885	1.490	0.061	0.140	1.182	0.050
DU14	1.000	1.750	0.063	0.130	1.380	0.040
	1.010	1.740	0.061	0.140	1.370	0.050
DU16	1.125	2.000	0.063	0.161	1.567	0.040
	1.135	1.990	0.061	0.171	1.557	0.050
DU18	1.250	2.125	0.063	0.161	1.692	0.040
	1.260	2.115	0.061	0.171	1.682	0.050
DU20	1.375	2.250	0.063	0.161	1.817	0.040
	1.385	2.240	0.061	0.171	1.807	0.050
DU22	1.500	2.500	0.063	0.192	2.005	0.040
	1.510	2.490	0.061	0.202	1.995	0.050
DU24	1.625	2.625	0.063	0.192	2.130	0.040
	1.635	2.615	0.061	0.202	2.120	0.050
DU26	1.750	2.750	0.063	0.192	2.255	0.040
	1.760	2.740	0.061	0.202	2.245	0.050
DU28	2.000	3.000	0.093	0.192	2.505	0.070
	2.010	2.990	0.091	0.202	2.495	0.080
DU30	2.125	3.125	0.093	0.192	2.630	0.070
	1.135	3.115	0.091	0.202	2.620	0.080
DU32	2.250	3.250	0.093	0.192	2.755	0.070
	2.260	3.240	0.091	0.202	2.745	0.080

Strip: Imperial

Inch Sizes In lengths (L) of 18in		
Group No.	T in	W in
0	0.0277 - 0.0293	2.75
1	0.0430 - 0.0447	4
2	0.0586 - 0.0602	4
3	0.0740 - 0.0756	4
4	0.0897 - 0.0913	4
5	0.1190 - 0.1210	4

All dimensions in inches.